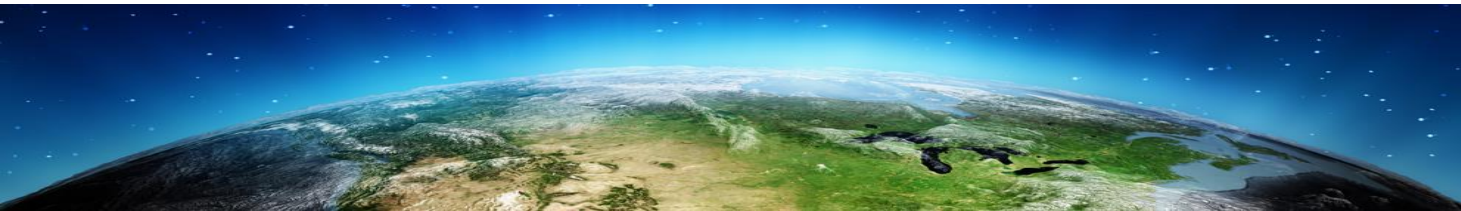
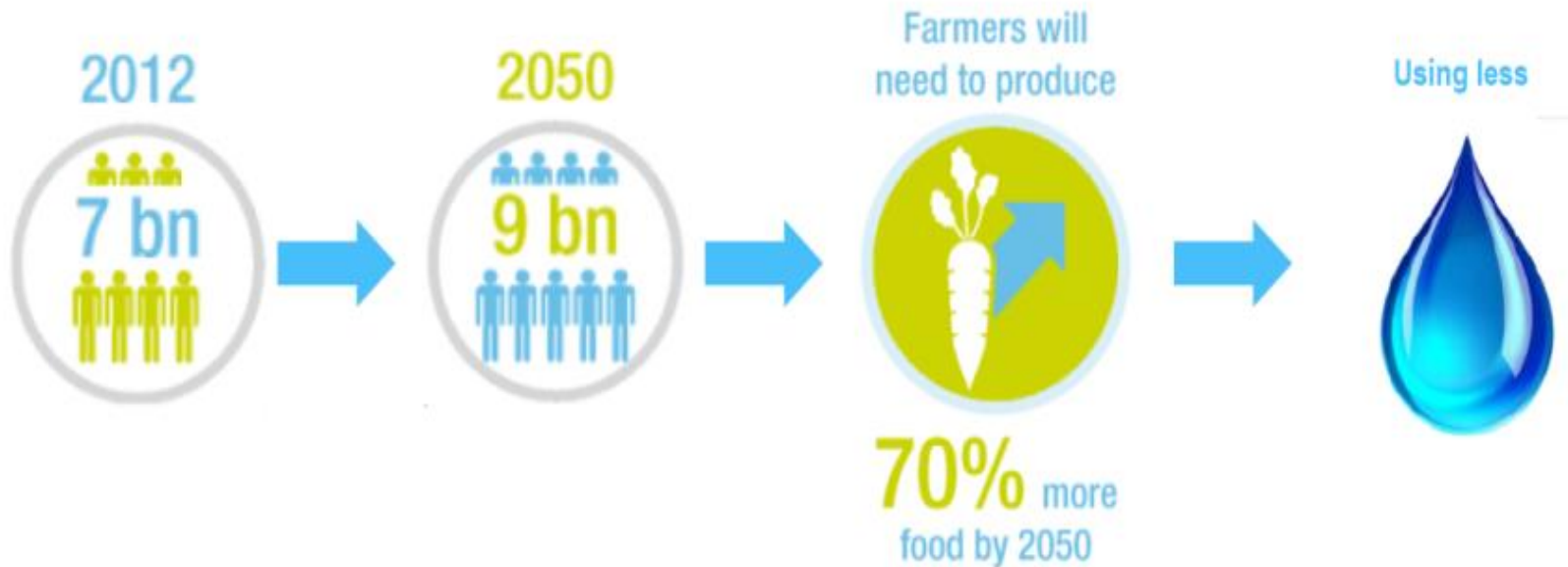




# **The Global Vegetation Database 3.0 for Water Productivity and Food Security**

# Context

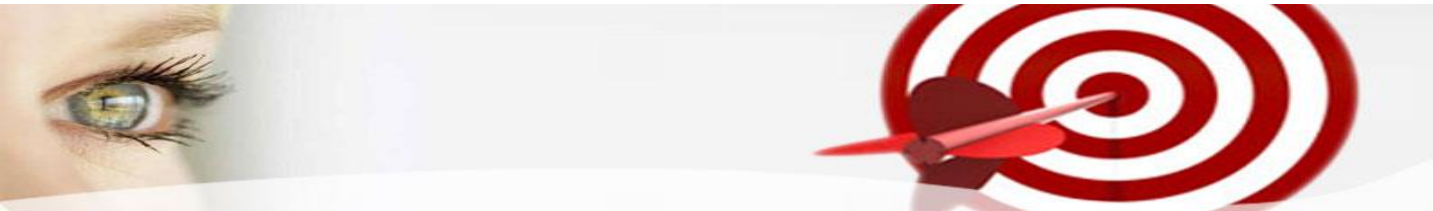


# MISSION

## Waterwatch Foundation

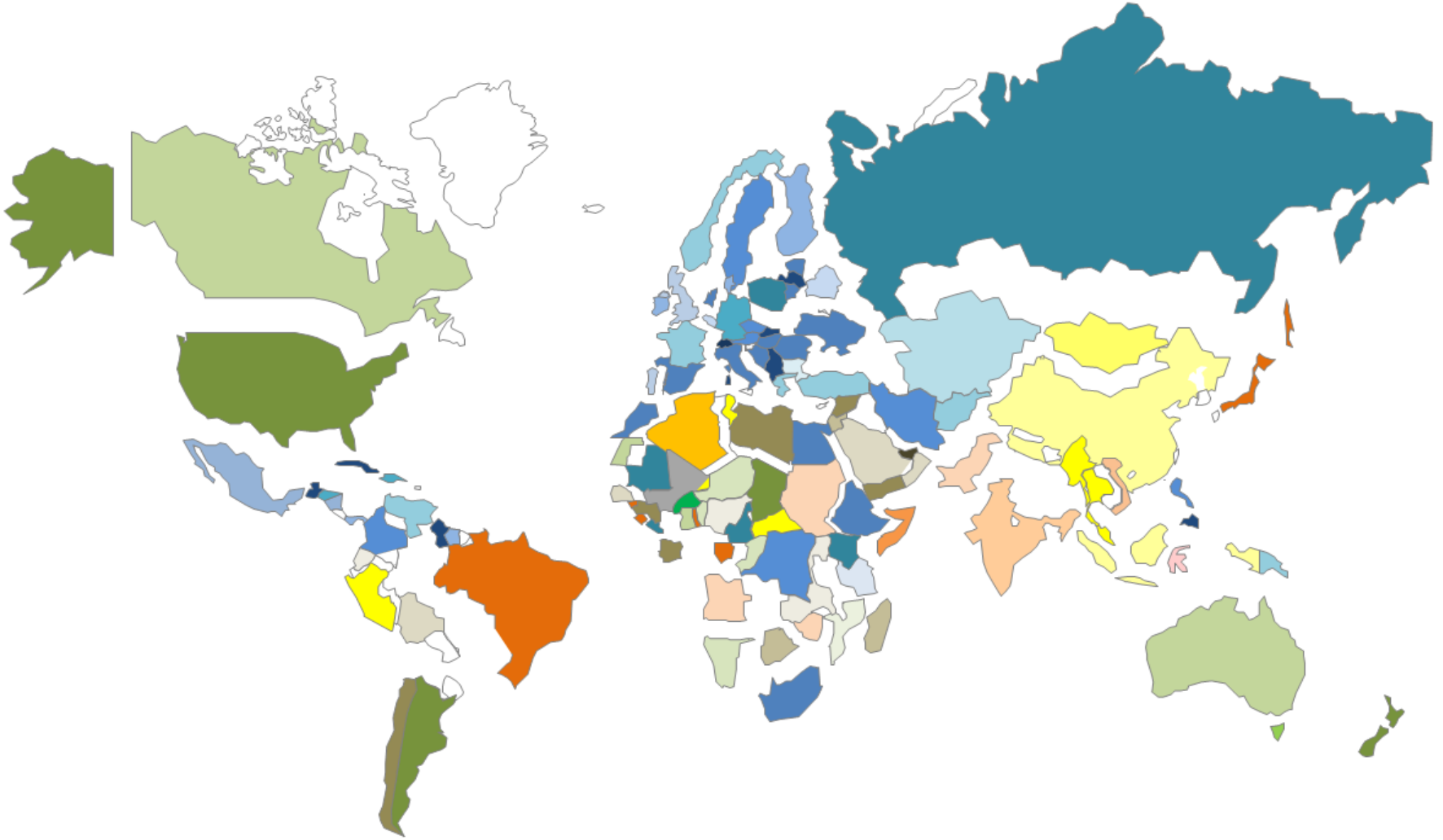
Enable all stakeholders in food-production with geo-based information technologies to achieve sustainable increase of land- and water productivity to improve global food security.

*Enable = knowledge, service, product, access*



*Makes the world a better place*

# Current databases a patchwork



# Global Vegetation Database 3.0 provides:

- A uniform database for the whole world;
- Opportunity to compare results on a global level;
- Ability to objectively evaluate a wide scale of data components;
- Quantitative objective data instead of indications;
- Accessible and easy-to-use for all stakeholders



# Vegetation database 3.0

For **WATER PRODUCTIVITY**



CONFIDENTIAL



Makes the world a better place

# Application Database

Database is a highly useful tool to:

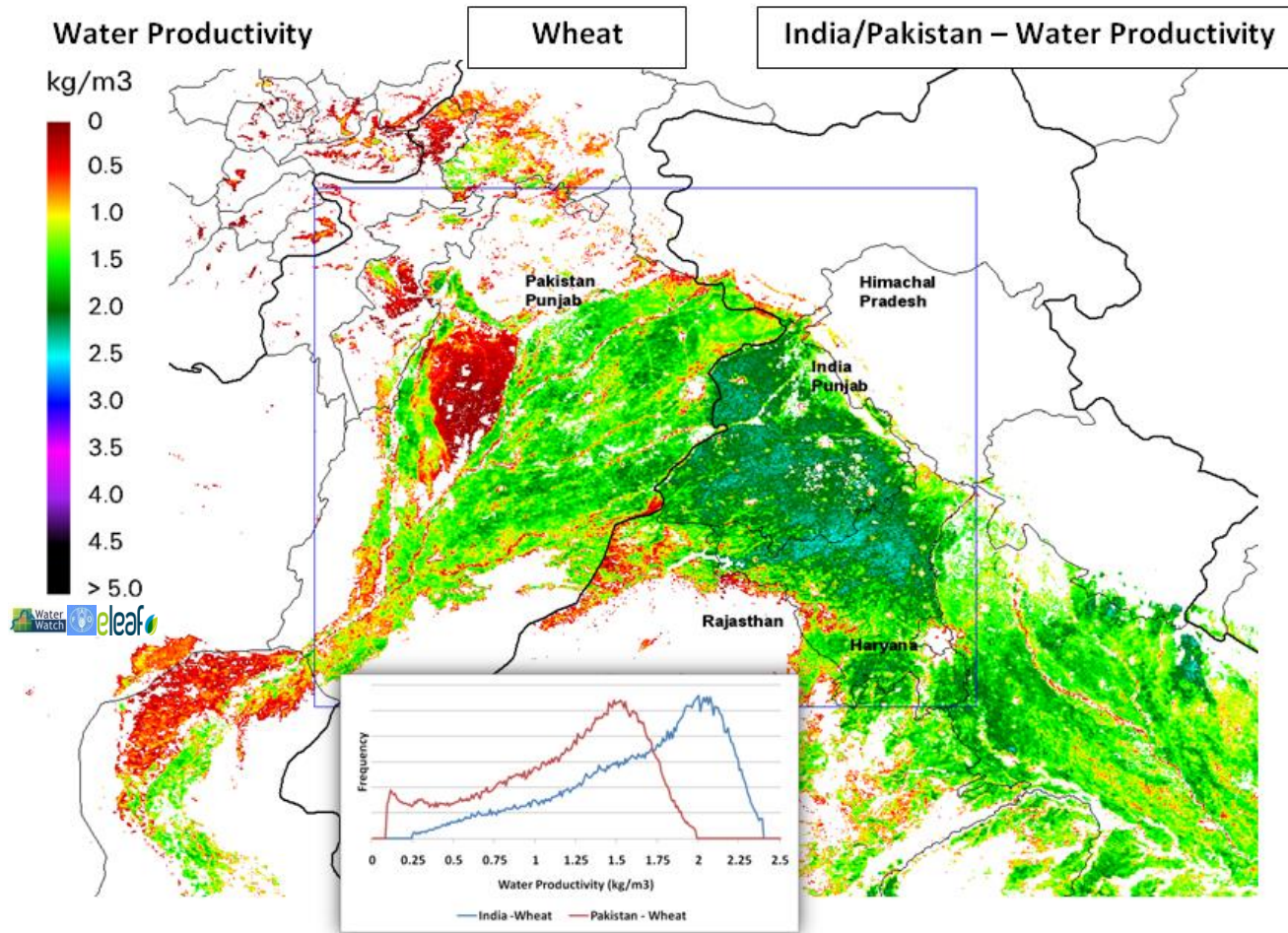
- Improve efficiency in water use – more crop per drop
- Increase yields
- Measure carbon intake of trees and crops

Other applications:

- Early warning possible drought;
- Determine water requirement in areas pro-actively;
- Objective comparison between policies in different areas.



# Water Productivity e.g. Global Wheat



CONFIDENTIAL



# WWF Partners & Ambassadors

Founding Partners



Cooperation Partners



Ambassadors

Herman Wijffels,  
Ernst van den Ende,  
Ad van der Sluijs  
Vincent Everts.



Makes the world a better place

Initiated by the founders of eLEAF



*Makes the world a better place*

Contact :

Waterwatch Foundation

Email : [info@waterwatchfoundation.com](mailto:info@waterwatchfoundation.com)