

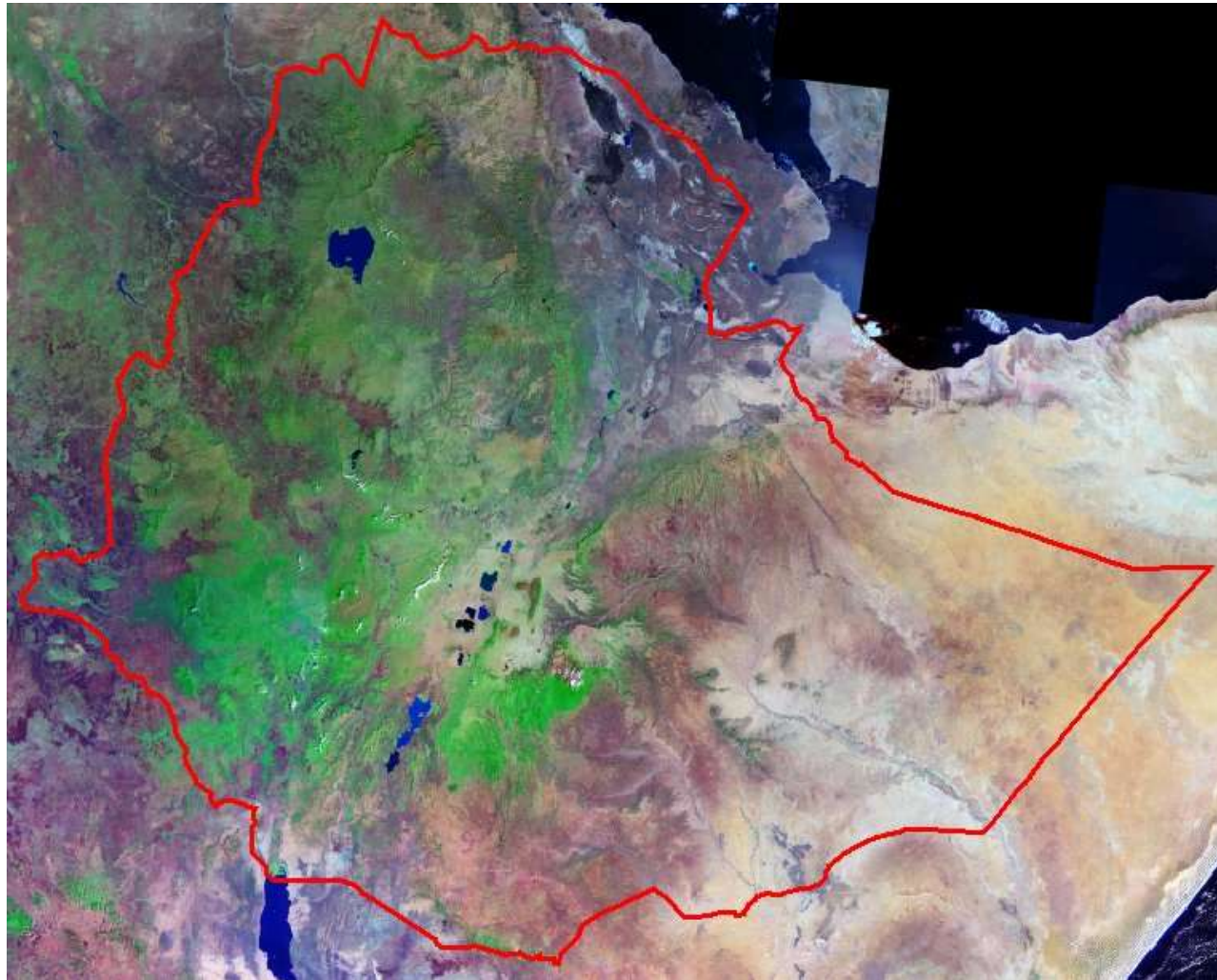


Food security & Satellite information services



Mark Loos

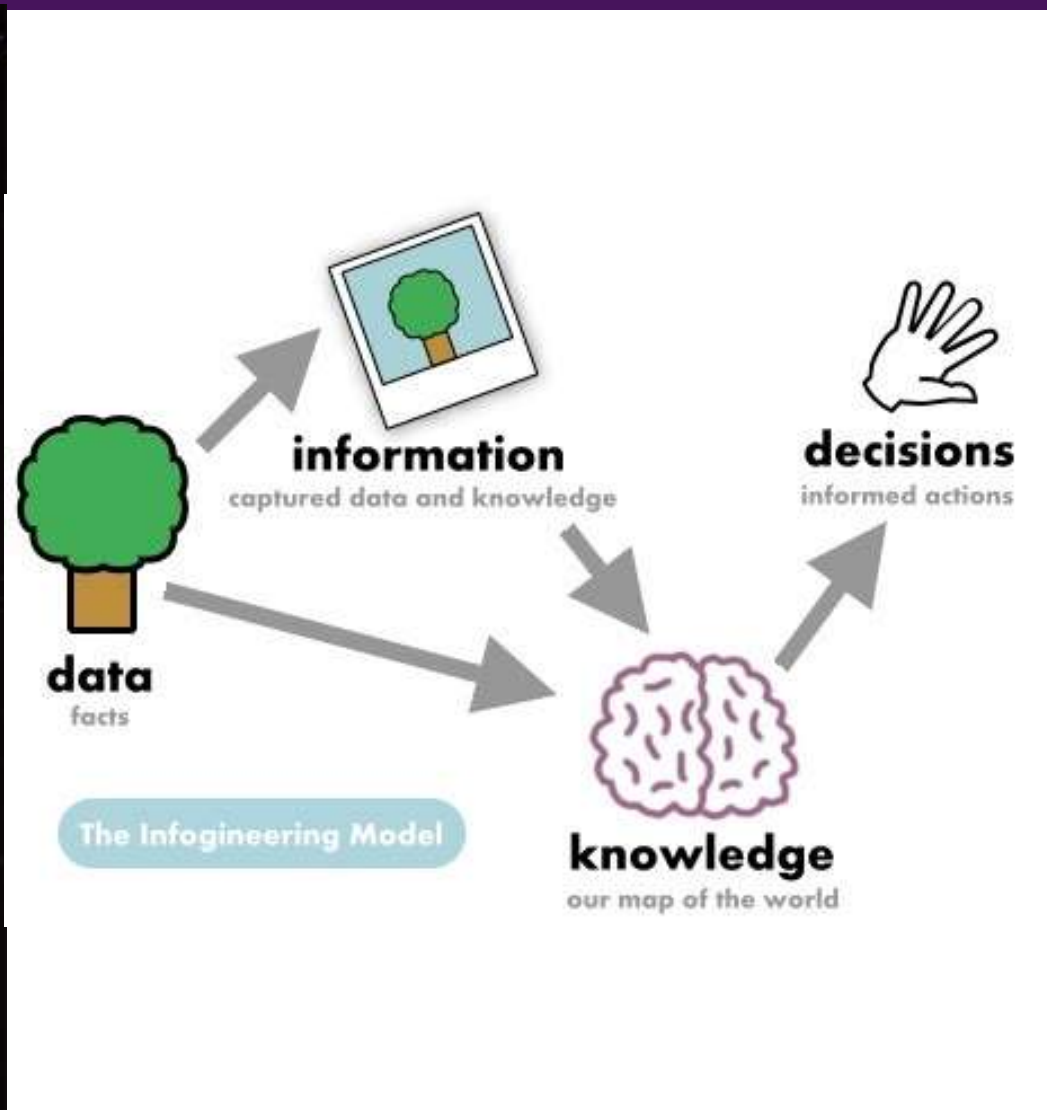
Netherlands Space Office (NSO)

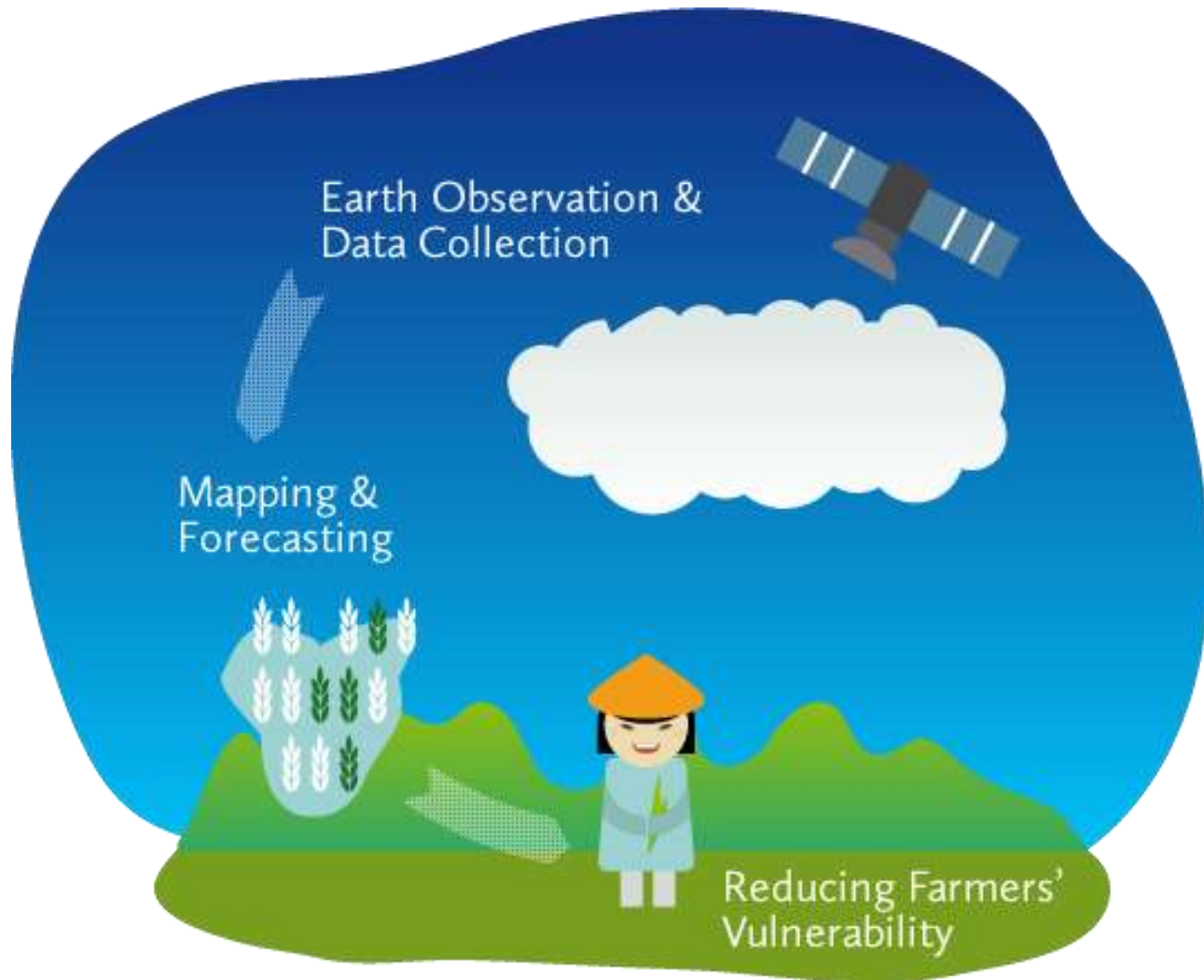




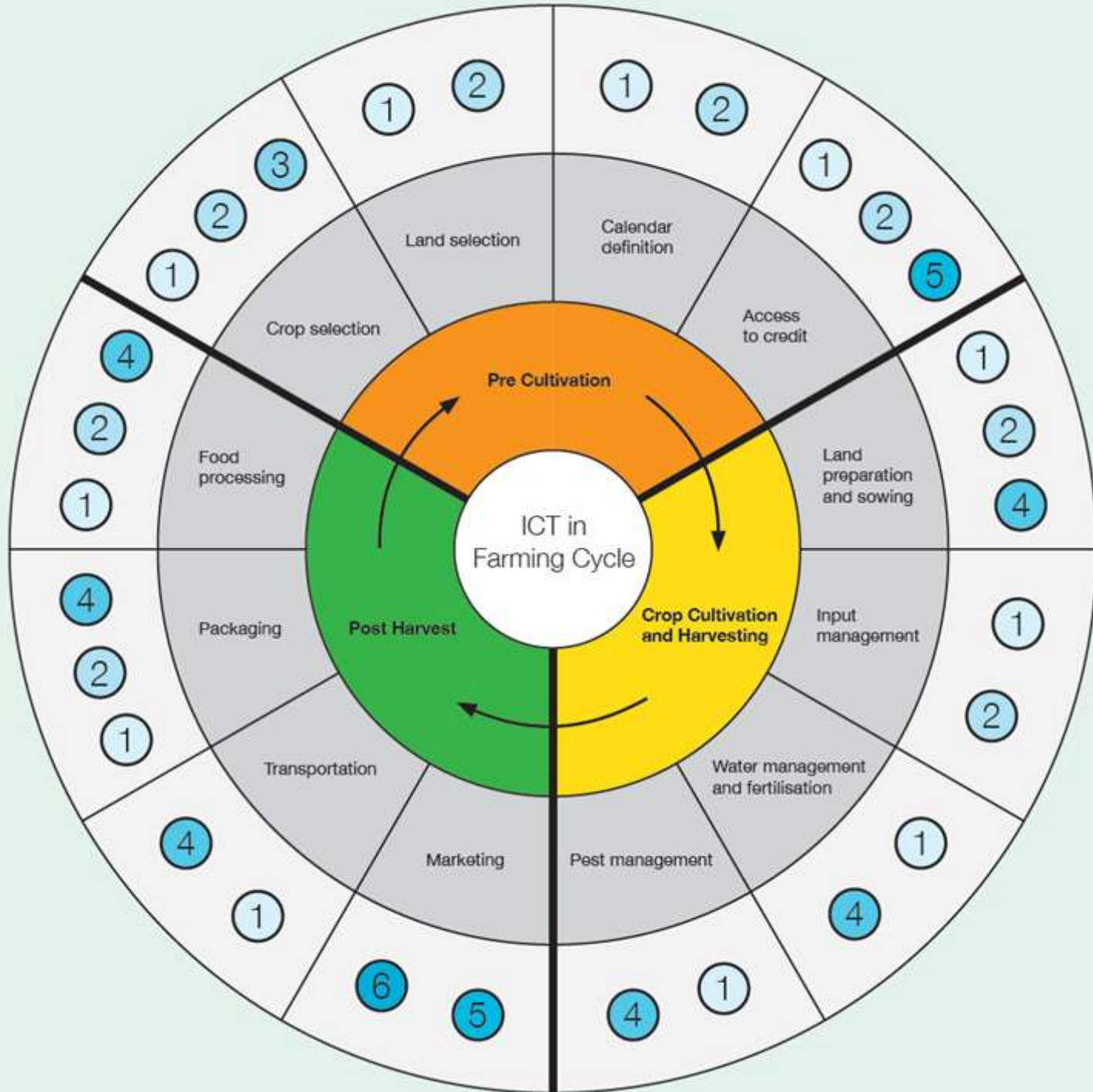
Effects of climate change on
Food & water security





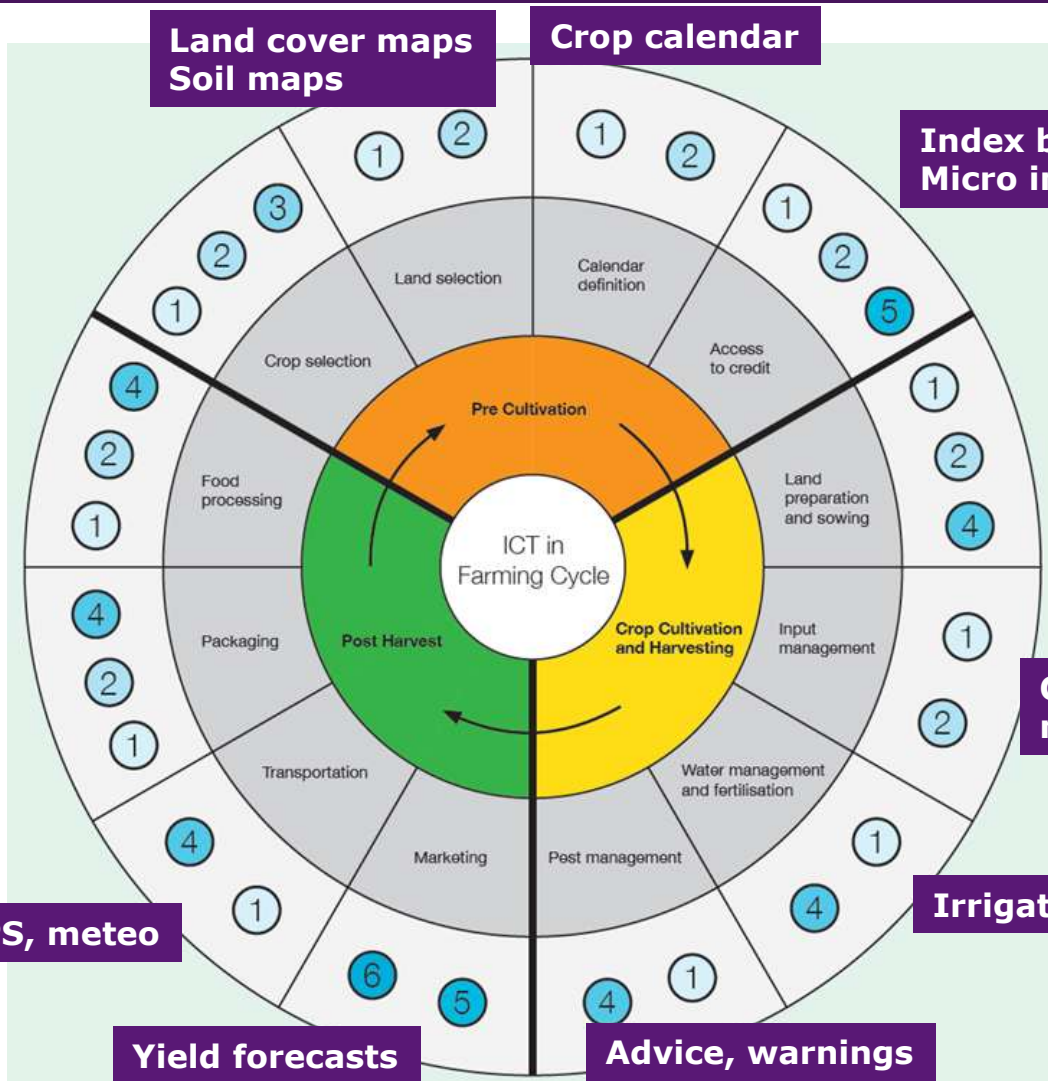


- ① Information systems including DSS/MISS/GIS etc
- ② ICT-enabled learning and knowledge exchange
- ③ Modelling solutions
- ④ Sensory and proximity devices
- ⑤ ICT-enabled networking solutions
- ⑥ Online commerce tools (eCommerce/mCommerce)





- 1 Information systems including DSS/MISS/GIS etc
- 2 ICT-enabled learning and knowledge exchange
- 3 Modelling solutions
- 4 Sensory and proximity devices
- 5 ICT-enabled networking solutions
- 6 Online commerce tools (eCommerce/mCommerce)



GPS, meteo

Yield forecasts

Advice, warnings

Irrigation advice

Crop growth monitoring

Land cover maps
Soil maps

Index based
Micro insurance

Land cover maps
Soil maps

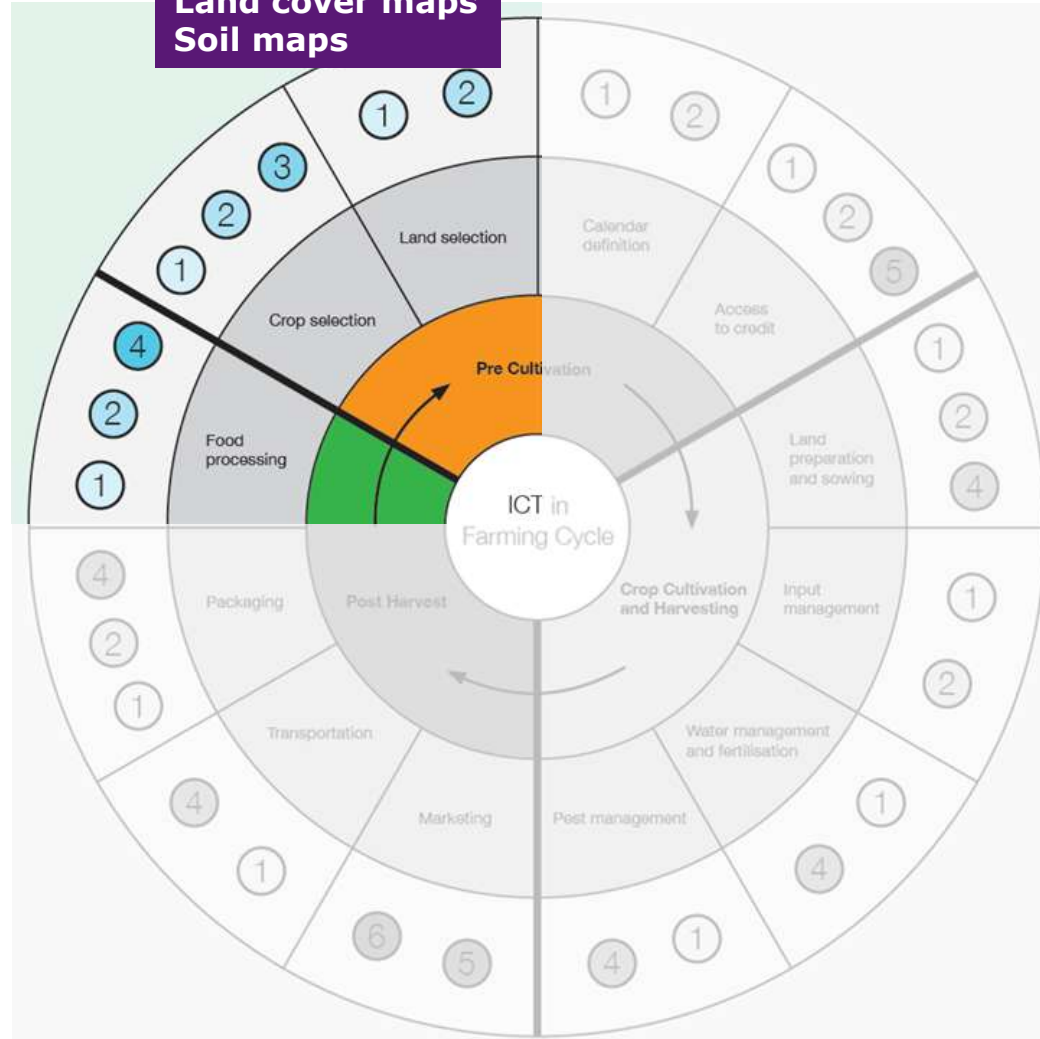
Crop calendar





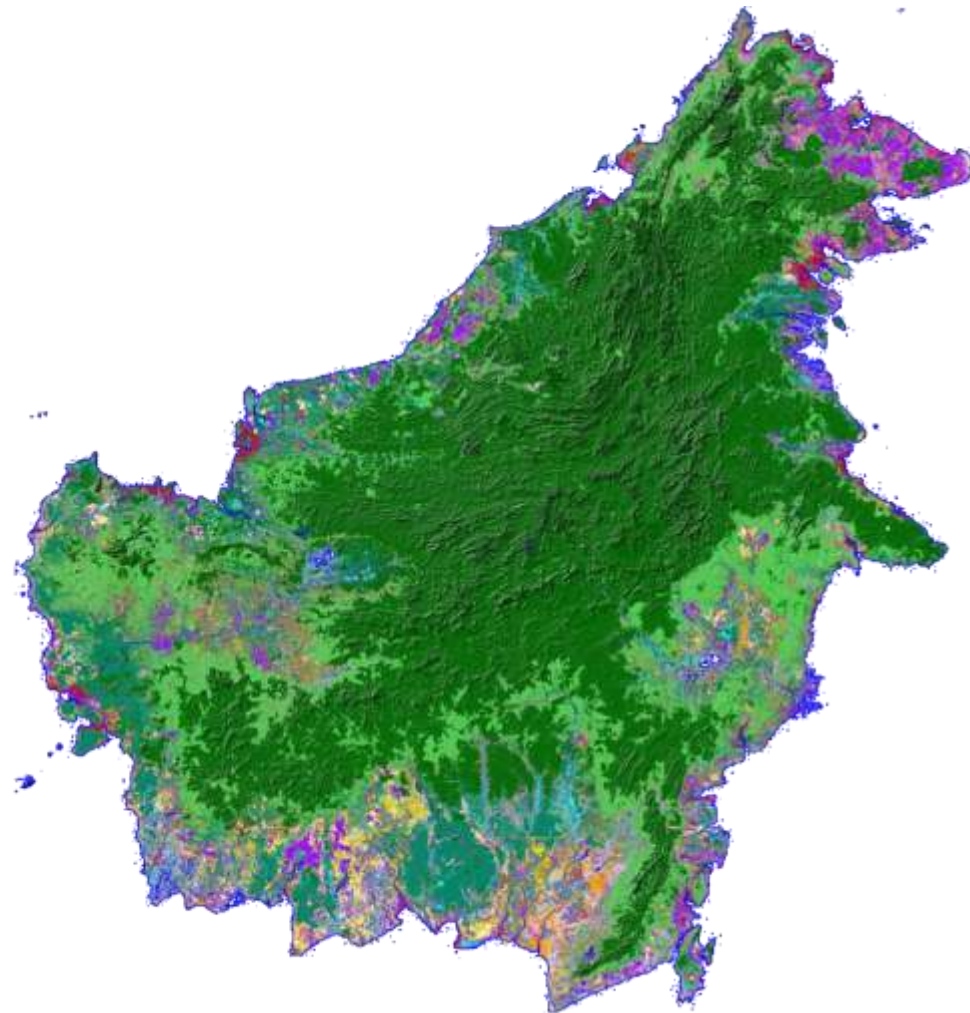
Land cover maps Soil maps

- 1 Information systems including DSS/MISS/GIS etc
- 2 ICT-enabled learning and knowledge exchange
- 3 Modelling solutions
- 4 Sensory and proximity devices
- 5 ICT-enabled networking solutions
- 6 Online commerce tools (eCommerce/mCommerce)





Kalimantan Land cover map (radar) (SarVision)



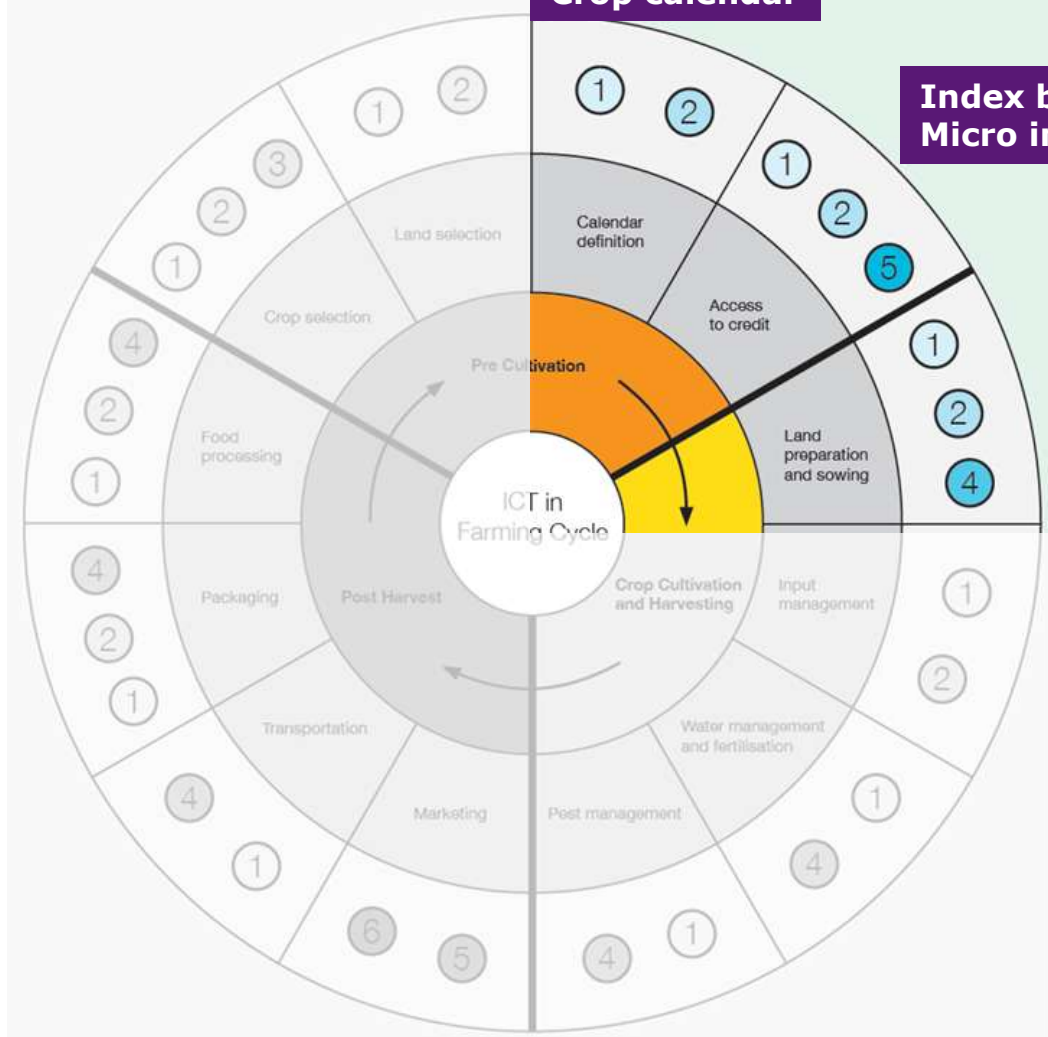


- 1 Information systems including DSS/MISS/GIS etc
- 2 ICT-enabled learning and knowledge exchange
- 3 Modelling solutions
- 4 Sensory and proximity devices
- 5 ICT-enabled networking solutions
- 6 Online commerce tools (eCommerce/mCommerce)

Crop calendar

Index based Micro insurance


**Land cover maps
Soil maps**





Crop calendar - a crop production information tool for decision making

english français español



Food and Agriculture Organization of the United Nations

For a world without hunger

FAO Home

Plant Production and Protection Home

Seeds and PGR Home


State of the World

Knowledge Resources

WIEWS

Crop calendar

crop calendar



about

rehabilitation activities following natural or human-led disasters. Furthermore, the Crop Calendar can serve as a quick reference tool in selecting crop varieties to adapt to changing weather patterns accelerated by climate change.

The Crop Calendar database is being maintained at a regional level and is based on inputs from member countries. The Crop Calendar database currently covers 43 African countries and contains information on more than 130 crops, located in 283 agro-ecological zones.

read more instructions

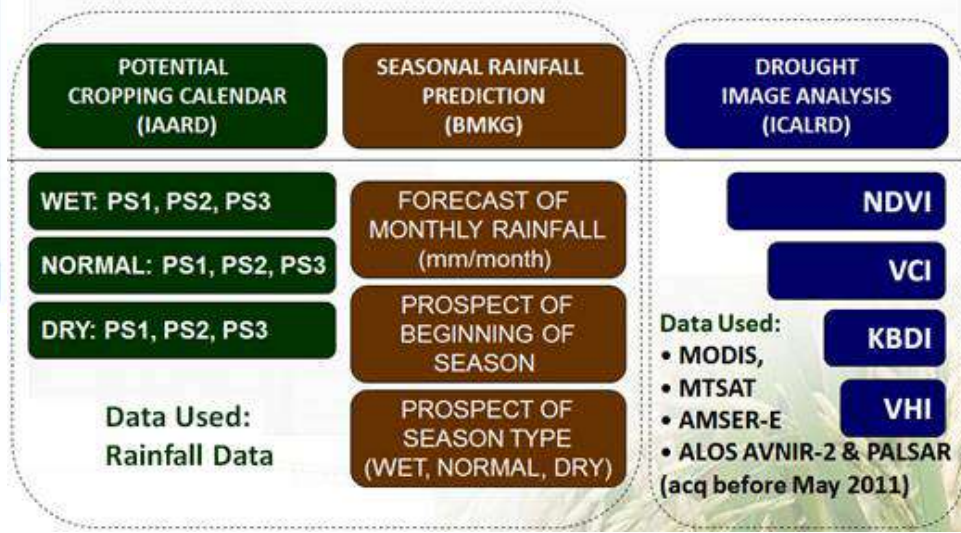
select a crop

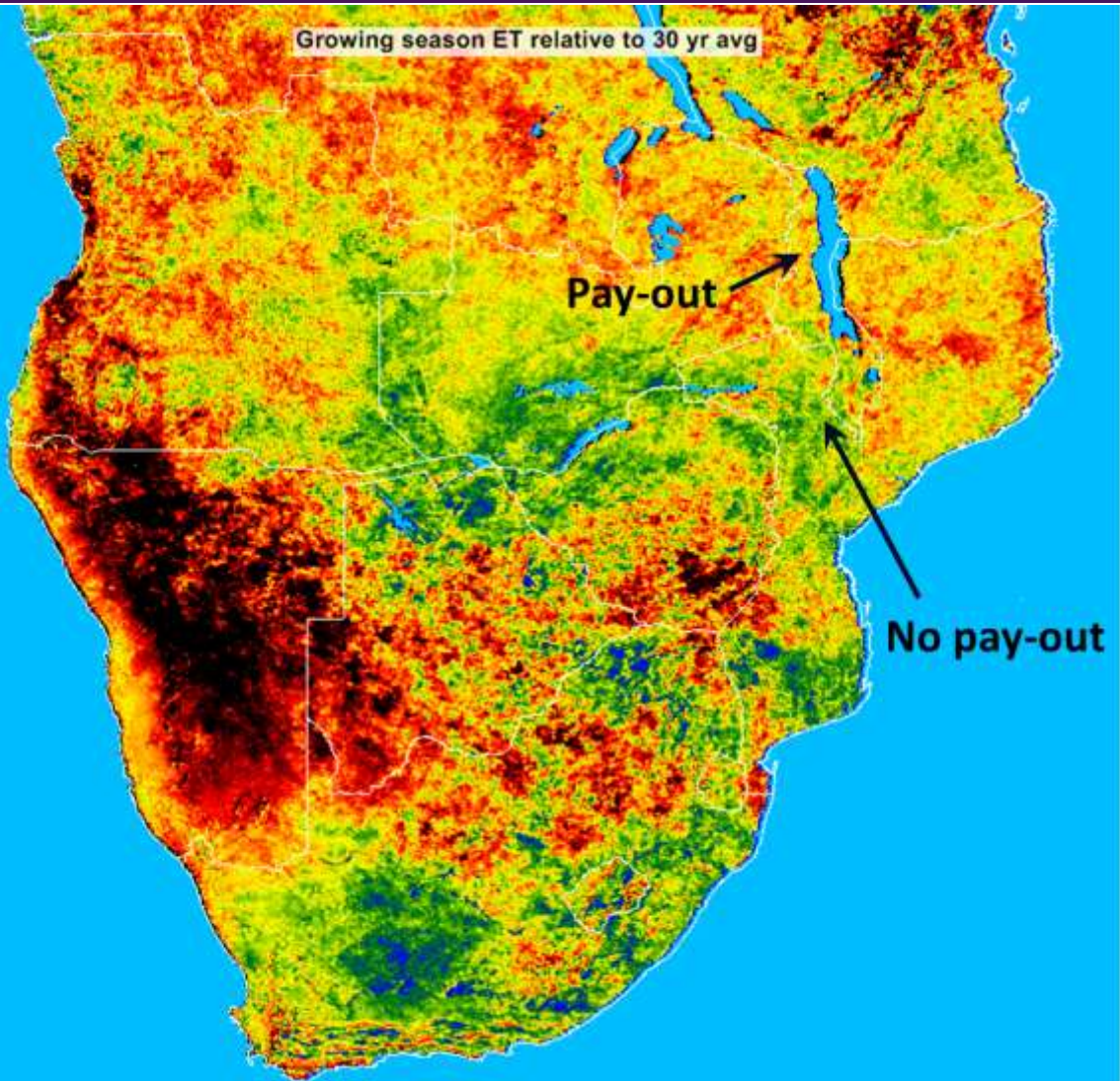
- Amaranthus
- Artichoke
- Asparagus
- Aubergine
- Bambara groundnut
- Banana
- Banana, Abyssinian
- Barley
- Bean common, dry
- Bean, Lima
- Bean, broad
- Bean, broad green
- Bean, faba
- Bean, green
- Beet, red
- Beet, table
- Benniseed
- Bitterweed

next



INTEGRATION OF CROPPING PATTERNS, SEASONAL RAINFALL AND SATELLITE IMAGE ANALYSIS



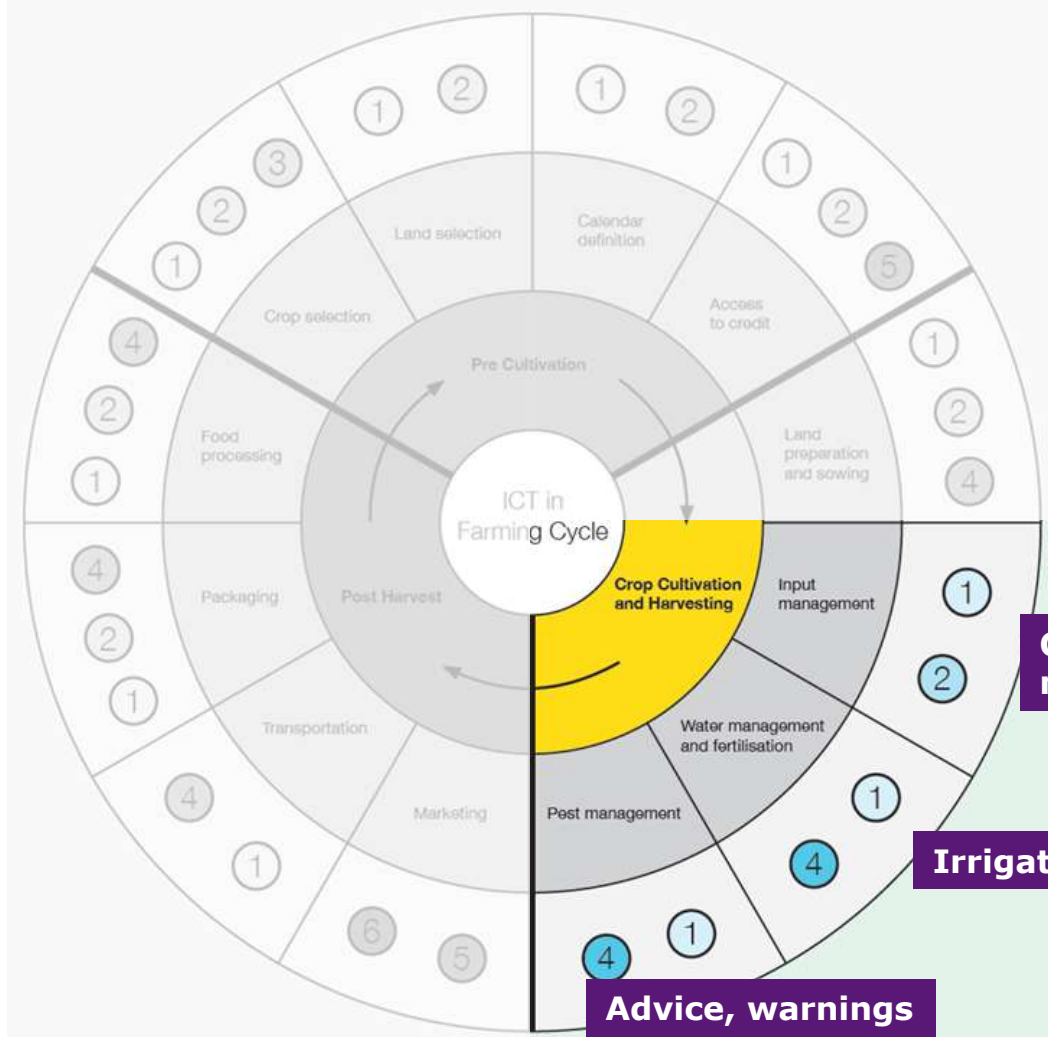


Malawi:
Maize index
insurance
(EARS)





- 1 Information systems including DSS/MISS/GIS etc
- 2 ICT-enabled learning and knowledge exchange
- 3 Modelling solutions
- 4 Sensory and proximity devices
- 5 ICT-enabled networking solutions
- 6 Online commerce tools (eCommerce/mCommerce)



Crop growth monitoring

Irrigation advice

Advice, warnings





• Growth

- biomass production (kg/ha)
- CO2 intake (kg/ha)
- leaf area index LAI (m² leaf/m² ground)
- vegetation index NDVI

• Moisture

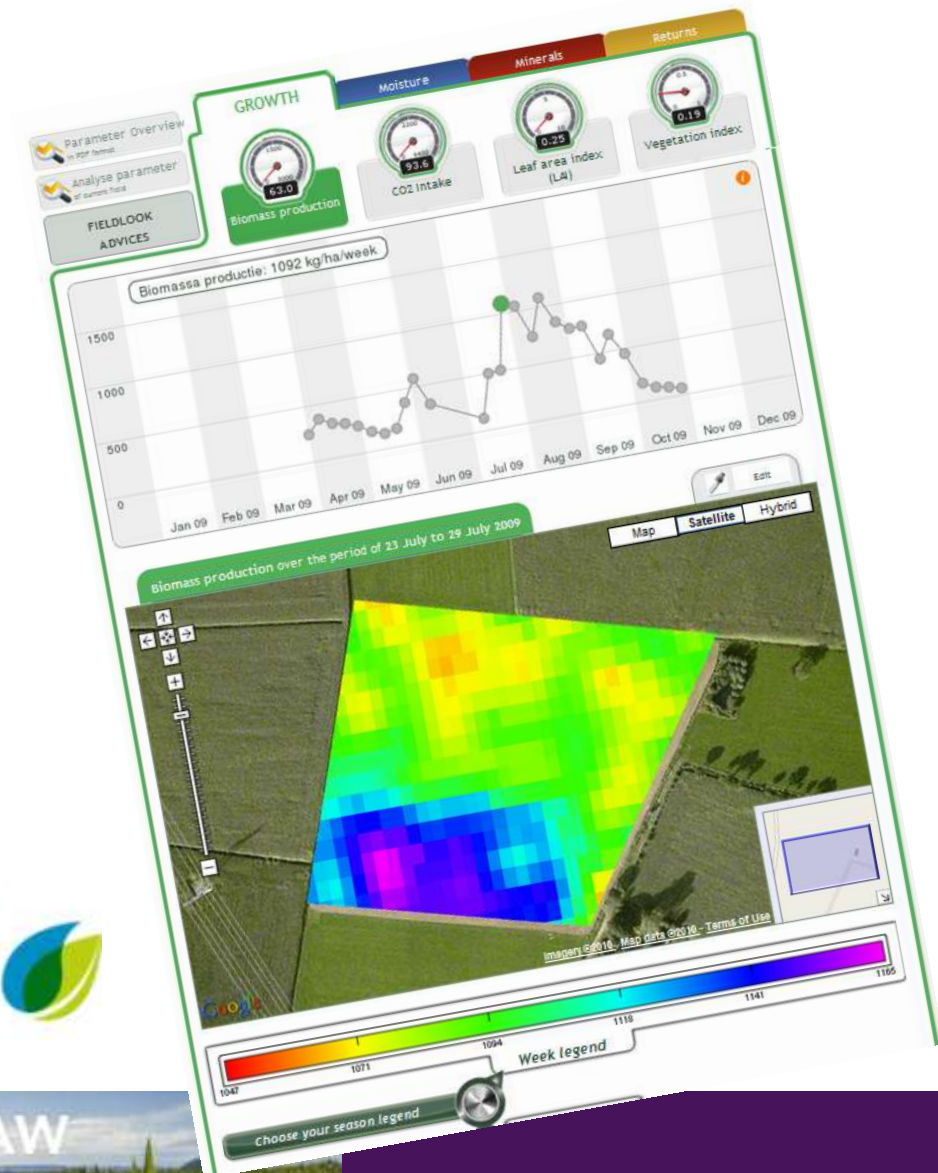
- evaporation shortage (mm/week)
- current evaporation (mm/week)
- surplus rain (mm/2 weeks)
- reference evaporation

• Minerals

- Nitrogen content in the top leaf layer (kg/ha)
- Nitrogen content in all leaves (kg/ha)

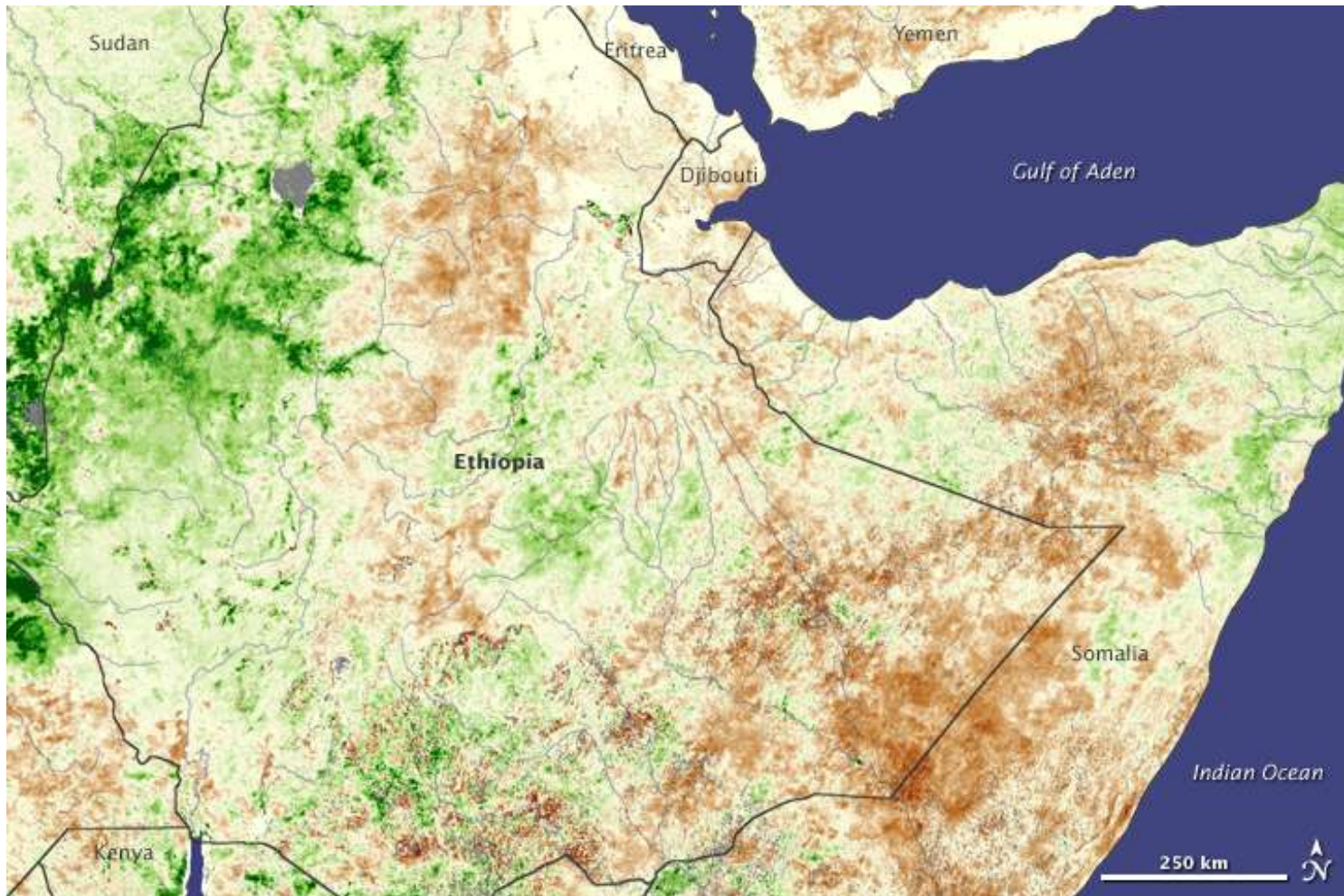
• Yield

- Fruit Yield
- Root Yield
- Dry matter content
- Sugar Yield
- Protein content



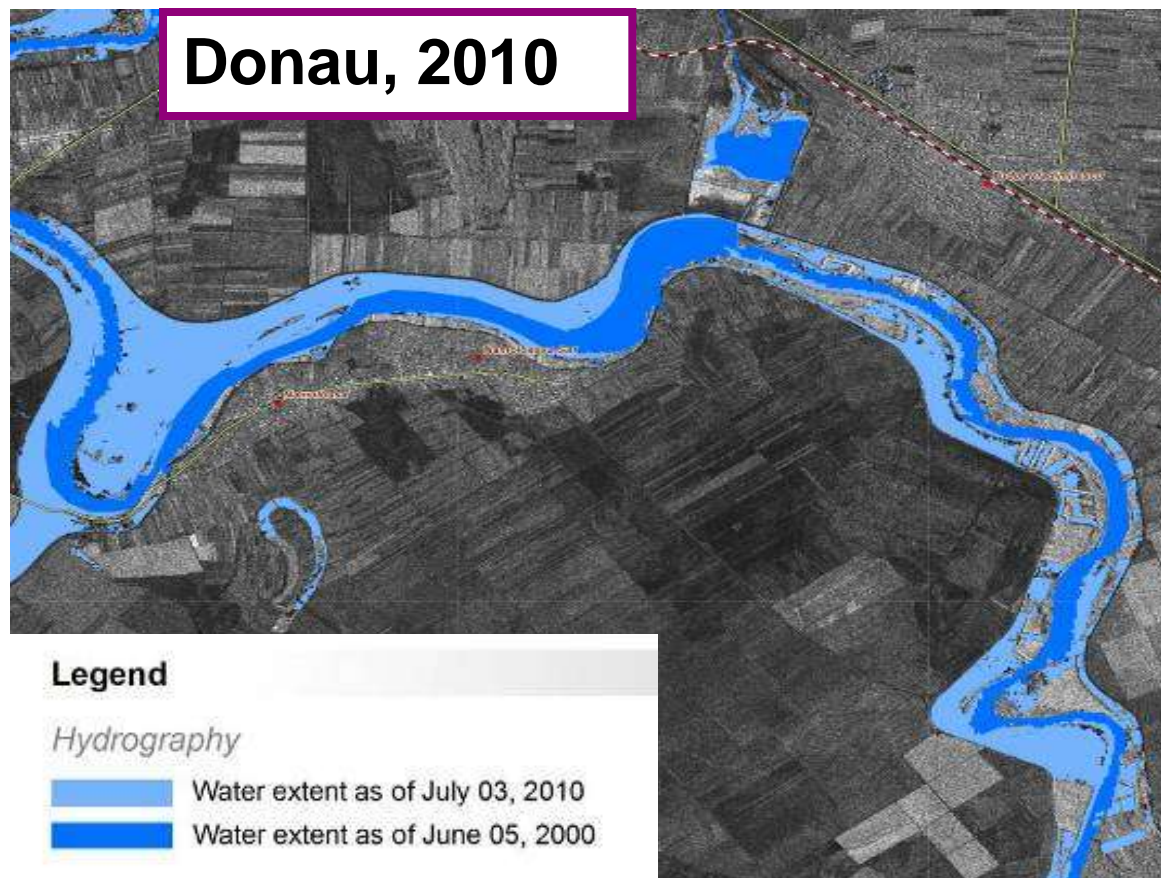


Drought in Ethiopia in 2008





Flood monitoring





Hazard & Risk Analysis



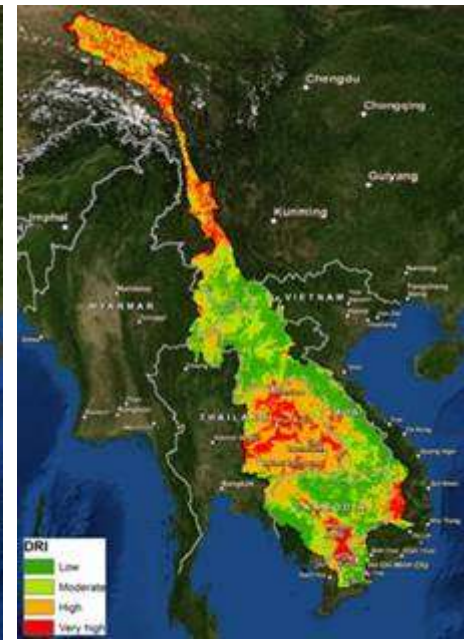
Vulnerability Index
Distance
to river



Vulnerability Index
Population density



Vulnerability Index
Precipitation



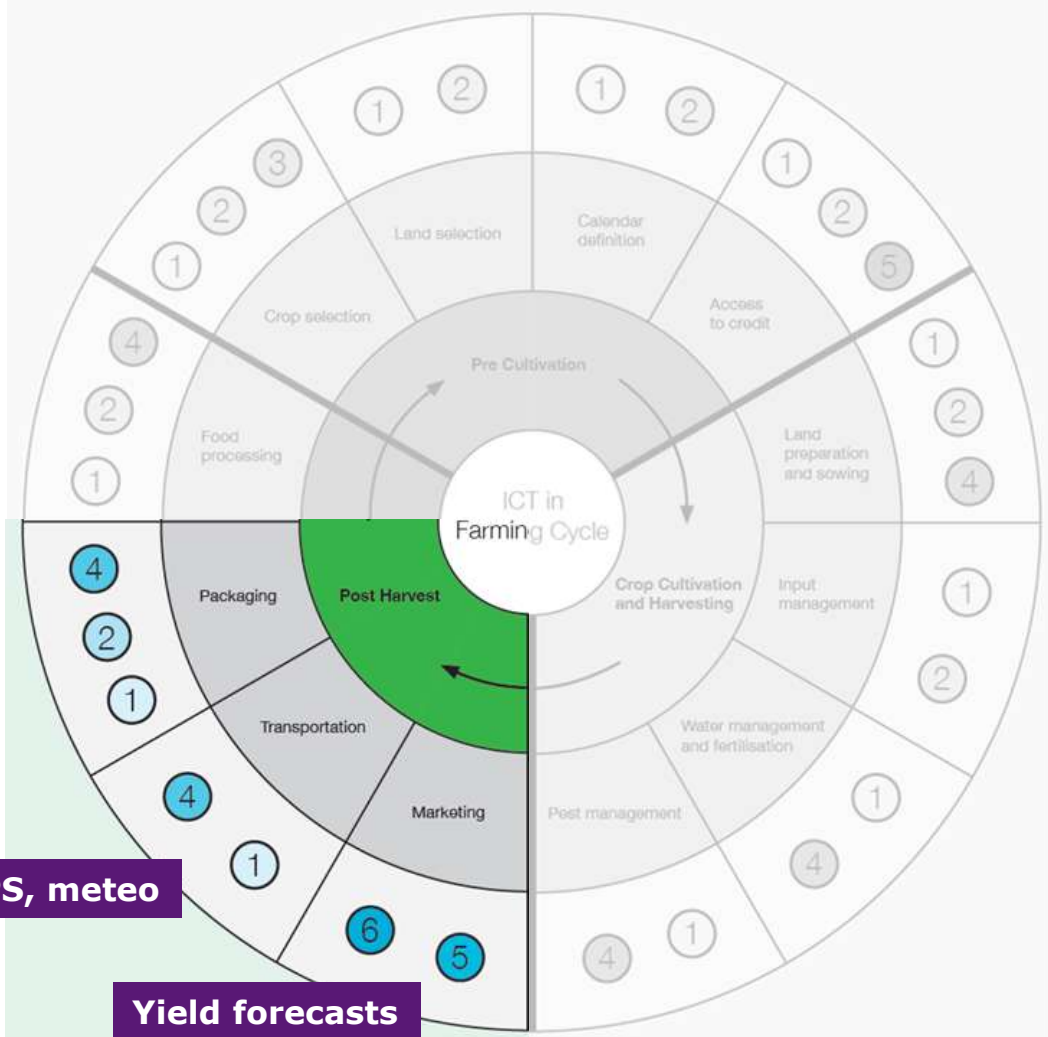
Drought
Risk Map

FutureWater





- 1 Information systems including DSS/MISS/GIS etc
- 2 ICT-enabled learning and knowledge exchange
- 3 Modelling solutions
- 4 Sensory and proximity devices
- 5 ICT-enabled networking solutions
- 6 Online commerce tools (eCommerce/mCommerce)

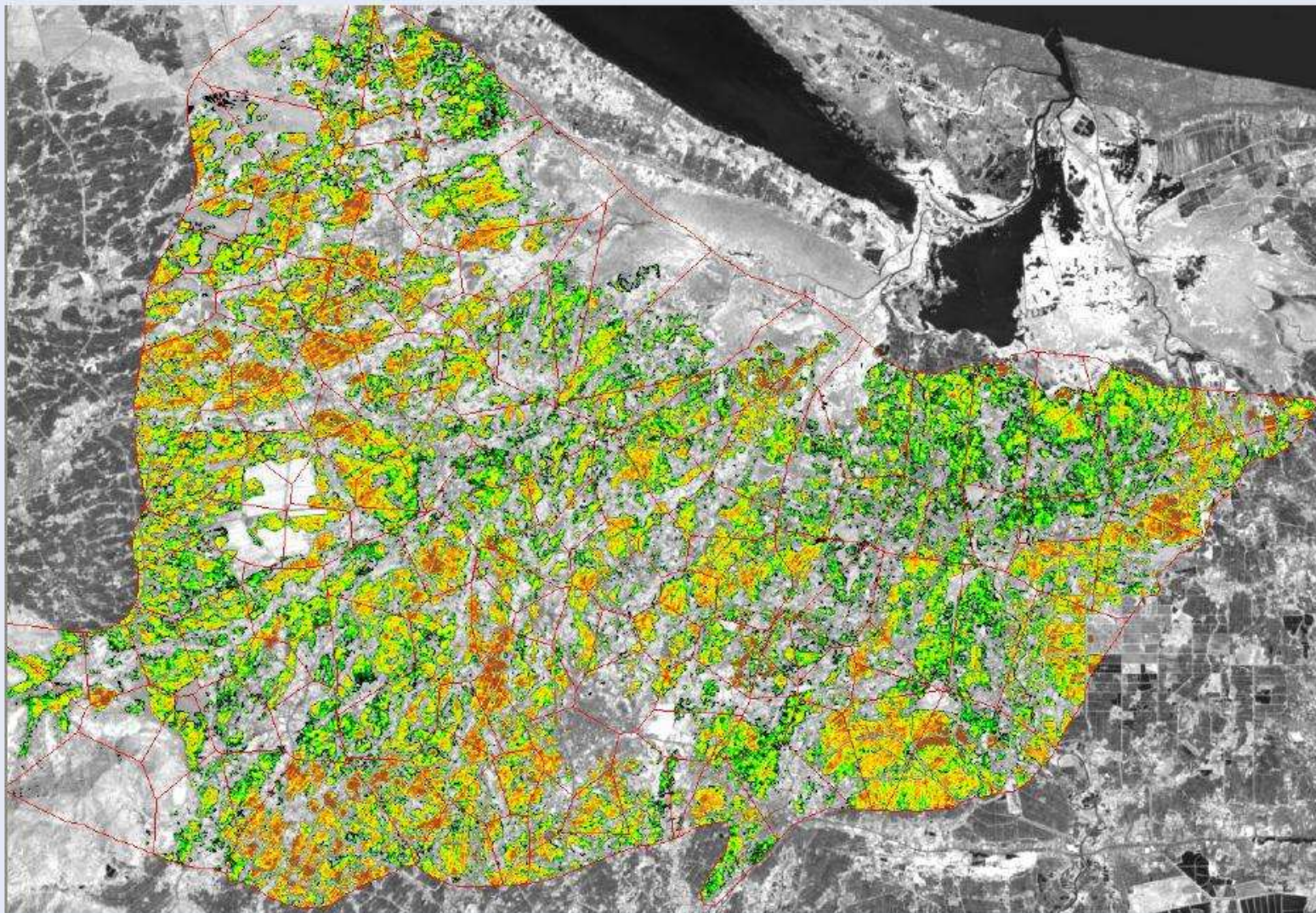


GPS, meteo

Yield forecasts



Rice Yield maps





Why based on satellite data?

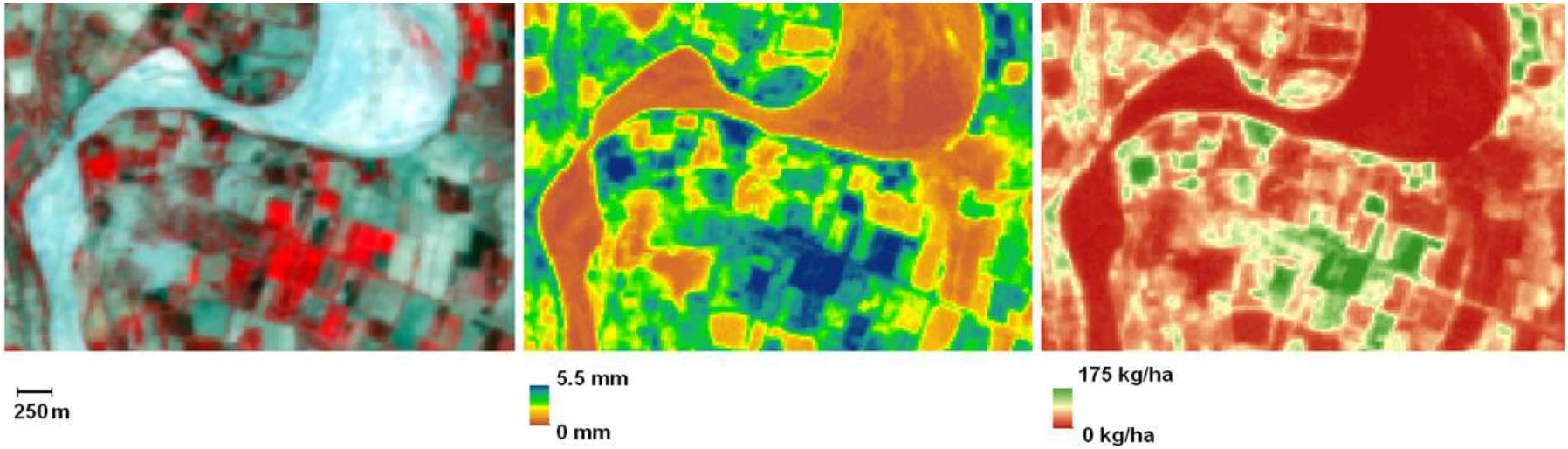
- Objective, consistent, cross border, frequent
- Sparse (local) ground monitoring infrastructure
- 25+ years time series (geostationary satellite, Landsat)
- Many new satellites (to be) launched, no or low cost





TIME SERIES





Example: Raw satellite data (L), derived daily evapotranspiration (M) and biomass production (R).





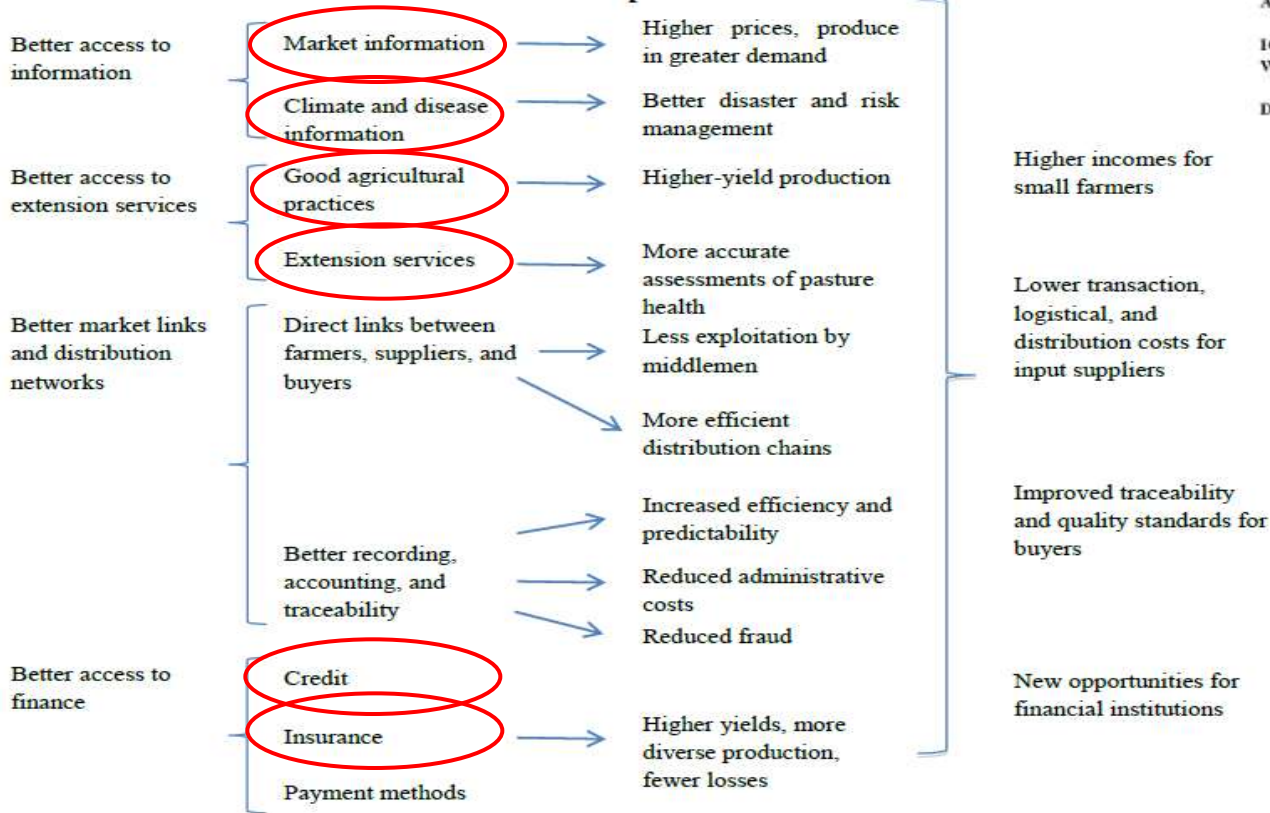
Thank you for your attention





Mobile/ICT applications

Figure 1. Results Generated by Mobile Applications for Agricultural and Rural Development

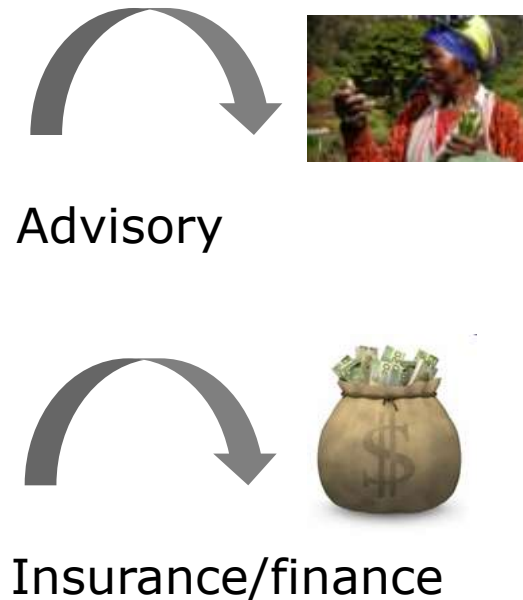


Mobile Applications for Agriculture and Rural Development

Christine Zhenwei Qiang, Siou Chew Kuek*, Andrew Dymond and Steve Esselaar

ICT Sector Unit
World Bank

December 2011





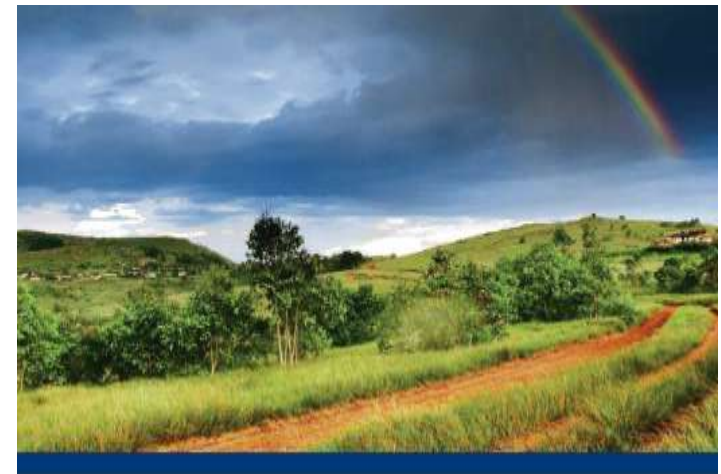
Possible service provision – financial

Possible financial services may include, e.g.:

Index-based insurance

Credit/loans

- Weather information
- Climate information
- Soil mapping
- Crop yields
- Monitoring (e.g. vegetation growth)
- Crop forecasts



Weather Index-based Insurance
in Agricultural Development
A Technical Guide



World Food
Programme



IFAD
Enabling Rural Development
to 2025

http://www.ifad.org/ruralfinance/pub/W11_tech_guide.pdf





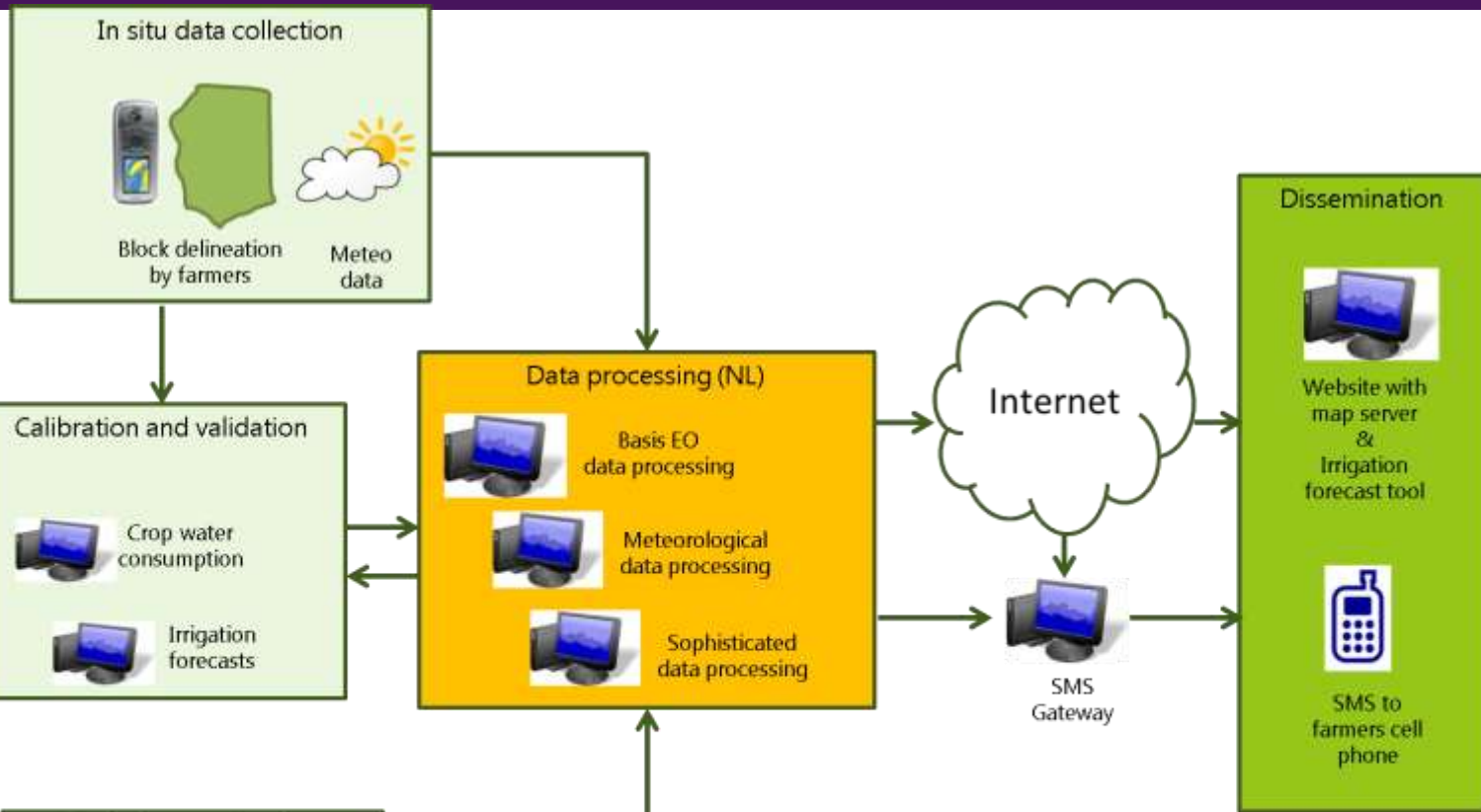
Possible service provision – advice

Possible advisory services may include, e.g.:

- Crop calendars
- Weather information
- Mapping
- Monitoring (e.g. vegetation growth)
- Irrigation / nutrient supply advices

- Stand alone
- Integrated in value chain services
- Complementary to micro-insurance





Smart ICT infrastructure





The crop has no water stress when the soil moisture is above the critical level and below the field capacity

When the soil moisture drops below the critical line, irrigation is advised

Irrigation advice

